

*"No Child Left
Sitting" at the*

EDUCARE KIDS IN MOTION SUMMER PROGRAM 2011



Educare Learning Center Calendar of Events Summer 2011

Note: All dates/times are subject to change. Any changes will be posted on the website, parent bulletin board and at the front desk.



Educare Calendar of Events

June 2011



Sun	Mon	Tue	Wed	Thu	Fri	Sat
<ul style="list-style-type: none"> Discovery Walks will begin at 10 a.m. unless otherwise indicated. A select group of school-age children will accompany children in Rooms 1a-4 as "big buddies" throughout the summer. Cooking fun times will be scheduled individually by classroom teachers. Fitness fun activities will be available after 10 a.m. Classroom will use their outside time to enjoy the fitness fun days. Locations TBA. New units of Study will occur every two weeks. The dates and topics are listed on the calendar on the Sunday prior to the new unit of study. 			1 Monthly Tuition Due	2	3	4
5	6	7	8	9	10	11
12	13	14 LAST DAY OF PS3	15 <i>Quarterly Tuition Due</i> LAST DAY OF FCPS & PS4	16 <u>ELC CLOSED</u> (In-service Day)	17 FIRST DAY OF ELC SUMMER PROGRAM Family Picnic & Moonbounce (EFA), 6:30-8:30 p.m.	18
19 June 17-July 1: <i>Patriotic Parades</i>	20 Water Play Day (Rm 1a/b) Critters & Conservation Visit 9:15 a.m. (All ages) Discovery Walk (Rm 2)	21 Water Play Day (Rm 2) Discovery Walk (Rm 3) Cooking Fun (Rm 4) FCPL Bookmobile	22 <i>Monthly Early Bird Tuition Due</i> Music Class (Rm 1b, 2, 3 & 4) Cooking Fun (Rm 2)	23 Water Play Day (Rm 3) Discovery Walk (Rm 4) Cooking Fun (SA) Spirit Day -Pajama Day (All ages)	24 Creek Day (SA) Water Play Day (Rm 4) Fitness Fun Obstacle Course (All Ages) Cooking Fun (Rm 1b)	25
26	27 <i>Bi-Weekly Tuition Due</i> Water Play Day (Rm 1a/b) Cooking Fun (Rm 2)	28 Water Play Day (Rm 2) Discovery Walk (Rm 1a/1b) Cooking Fun (Rm 3)	29 Music Class (Rm 1b, 2, 3 & 4) SA Bingo with Senior Center at ELC 1:00 p.m. Cooking Fun (Rm 1b) Parent Orientation, 5:30 p.m.	30 Water Play Day (Rm 3) Fitness Fun Parachute Play (All Ages) Cooking Fun (SA) Last Day of Breakfast Items Food Drive (EFA) Parent Workshop, 6:30-8:00 p.m.		



Educare Calendar of Events

July 2011

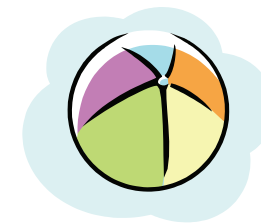


Sun	Mon	Tue	Wed	Thu	Fri	Sat
				Monthly & Preschool Tuition Due (July 1)	1 Discovery Walk (Rm 3) Patriotic Parade (4th of July) , 9:30 a.m. (All ages) Cooking Fun (Rm 4) SA Pool Day @ Brunswick Pool Popcorn Trolley	2
3 July 4-15: <i>Spectacular Sports</i>	4 ELC CLOSED (4th of July)	5 Water Play Day (Rm 2) Discovery Walk (Rm 1b) Cooking Fun (Rm 3)	6 Cooking Fun (Rm 2) Discovery Walk (Rm 4) Music Class (Rm 1b, 2, 3 & 4) SA Lemonade Stand @ Brunswick Senior Center	7 Water Play Day (Rm 3) Fitness Fun Bowling Brigade (All Ages) Discovery Walk (Rm 2) Cooking Fun (Rm 1a & 4)	8 Water Play Day (Rm 4 & SA) Food Groupies (Rm 1b/2) Cooking Fun (Rm 1b & SA) EFA Planning Meeting, 6:30 p.m.	9 Educare Family Night @ Frederick Keys Baseball Game, 7 p.m.
10	11 <i>Bi-Weekly Tuition Due</i> Water Play Day (Rm 1a/b) Cooking Fun (Rm 4)	12 FCPL Bookmobile Water Play Day (Rm 2) Discovery Walk (SA) Food Groupies (Rm 3/4) Cooking Fun (Rm 2) Spirit Day -Sports Day (All Ages) Parent Workshop, 6:30-8:00 p.m.	13 NO Music Class Discovery Walk (Rm 3) Cooking Fun (Rm 3) SA Lemonade Stand @ Brunswick Senior Center	14 Water Play Day (Rm 3) Discovery Walk (Rm 1a) Cooking Fun (SA)	15 Water Play Day (Rm 4) Fitness Fun Walk the Line (All Ages) Cooking Fun (Rm 1a/1b) SA Pool Day @ Brunswick Pool	16 Parent's Night Out (EFA) 4-9 p.m.
17 July 18-29: <i>Vigorous Vacations</i>	18 Water Play Day (Rm 1a/b) Discovery Walk (Rm 4) Cooking Fun (Rm 2) SA Bowling & Lunch in the Park, 10:30 a.m.-1:30 p.m.	19 Water Play Day (Rm 2) Food Groupies (Rm 1b/2) Cooking Fun (Rm 3)	20 <i>Early Bird Tuition Due</i> Mister Don Musical Performance (All Ages), 9:30/10:00 a.m. Fitness Fun Relay Races (All Ages) Cooking Fun (SA)	21 Water Play Day (Rm 3) Discovery Walk (Rm 1b) Cooking Fun (Rm 4) Parent Orientation, 5:30 p.m.	22 Center-wide Water Play Day (All Ages) Cooking Fun (Rm 4)	23
24/31	25 <i>Bi-Weekly Tuition Due</i> Water Play Day (Rm 1a/b) Discovery Walk (Rm 2) Food Groupies (Rm 3/4) Cooking Fun (Rm 4)	26 Water Play Day (Rm 2) Discovery Walk (Rm 1a) Cooking Fun (Rm 1b/SA)	27 Music Class (Rm 1b, 2, 3 & 4) SA Lemonade Stand/ Picnic @ ELC Cooking Fun (Rm 3)	28 Water Play Day (Rm 3) Cooking Fun (Rm 2) SA Keys Game, 12:00 p.m.	29 Popcorn Trolley Water Play Day (Rm 4) Fitness Fun Bean Bag Toss (All Ages) SA Pool Day @ Brunswick Pool Cooking Fun (Rm 1a)	30 Family Discovery Walk, 10 a.m.

Educare Calendar of Events



August 2011



Sun	Mon	Tue	Wed	Thu	Fri	Sat
August 1-12: <i>Pleasant Picnics</i>	1 Monthly & Preschool Tuition Due Water Play Day (Rm 1a/b) Fitness Fun Walk-a-Thon (All Ages) Cooking Fun (Rm 4)	2 Bookmobile visits Water Play Day (Rm 2) Discovery Walk (Rm 1a) Food Groupies (Rm 3/4) Cooking Fun (Rm 1a/1b)	3 Music Class (Rm 1b, 2, 3 & 4) Cooking Fun (SA) EFA Meeting, 6:30 p.m.	4 Water Play Day (Rm 3) Cooking Fun (Rm 2) SA Movie @ Holiday Cinemas "Mega Mind" 10 a.m.	5 Creek Day (Rm 4 & SA) Cooking Fun (Rm 3) Hot Dog/Watermelon Picnic, 3 p.m. (All Ages)	6
7	8 Bi-Weekly Tuition Due Water Play Day (Rm 1a/b) Discovery Walk (Rm 3) Food Groupies (Rm 1b/2) Cooking Fun (SA)	9 Water Play Day (Rm 2) Cooking Fun (Rm 4) SA Ice Skating & Ice Cream, 12-3 p.m.	10 Music Class (Rm 1b, 2, 3 & 4) Cooking Fun (Rm 3)	11 Water Play Day (Rm 3) Discovery Walk (Rm 2) Cooking Fun (Rm 1a/1b) Parent Workshop, 6:30-8:00 p.m.	12 Water Play Day (Rm 4) Fitness Fun Ball Mania (All Ages) Cooking Fun (Rm 2) SA Pool Day @ Brunswick Pool	13
14 August 15-25: <i>On-the-go Outdoors</i>	15 Water Play Day (Rm 1a/b) Fitness Fun Bubble Fun (All Ages) Cooking Fun (Rm 4)	16 Water Play Day (Rm 2) Discovery Walk (Rm 4) Food Groupies (Rm 1b/2) Cooking Fun (Rm 3) Parent Orientation, 5:30 p.m.	17 Grab N Go Breakfast, 6-9 a.m. Music Class (Rm 1b, 2, 3 & 4) Cooking Fun (Rm 1a/1b) Spirit Day -Hat Day (All Ages)	18 Discovery Walk (Rm 1b) Water Play Day (Rm 3) Cooking Fun (Rm 2) SA Movie @ Holiday Cinemas "Despicable Me" 10 a.m.	19 Water Play Day (Rm 4) MoonBounce, 9 a.m.-5 p.m. (All Ages) Water Play Day (SA) Cooking Fun (SA)	20 ELC Campfire Picnic & Discovery Walk, 4:00-7:00
21	22 Bi-Weekly Tuition Due Water Play Day (Rm 1a/b) Food Groupies (Rm 3/4) Cooking Fun (Rm 2)	23 FCPL Bookmobile Center-wide Field Day (All Ages) Cooking Fun (SA)	24 Monthly Early Bird Tuition Due Music Class (Rm 1b, 2, 3 & 4) Cooking Fun (Rm 3)	25 Water Play Day (Rm 3) Cooking Fun (Rm 4) Popcorn Trolley LAST DAY ELC SUMMER PROGRAM	26 ELC CLOSED (In-service Day)	27
28	29 FIRST DAY OF FCPS & ELC SCHOOL-YEAR PROGRAM	30	31	1 Monthly & Preschool Tuition Due Quarterly Tuition Due Sept. 15		

Educare Calendar of Events

Key: SA = school-age, PS = preschool hours only program, 1a = Room 1a/Infants Room, 1b = Toddlers, Room 2 = Two's program, Room 3 = Three's program, Room 4 = Pre-K/Four's program, EFA = Educare Family Association, FCPS = Frederick County Public Schools, FCPL = Frederick County Public Library

Mission Statement

Educare Community Mission Statement

We are dedicated to promoting positive development in children by:

- Providing dedicated staff who engage children in the joy and excitement of learning;
- Offering a quality curriculum using innovative and research-based teaching strategies;
- Building caring relationships through positive discipline offered in a safe and enriching environment;
- Establishing strong partnerships with parents/guardians; and
- Nourishing spiritual growth through modeling love and respect for each other and the world around us.

“Kids in Motion,” ELC’s Summer Program is in response to the “*Let’s Move!*”* campaign and will offer a multifaceted experience in learning about nutrition and getting physical on our 22 acres. Activities will include fitness fun outdoor experiences, discovery walks on our extensive nature trails, nutrition and cooking activities, and on-site moonbounce days. Our 22-acre, wooded campus contains four nature-enriched playgrounds, nature trails leading to Catocin Creek and Broad Run Creek. At Educare Learning Center kids are *moving all summer long!*

The *Let’s Move!* Campaign: This campaign was started by First Lady Michelle Obama, has an ambitious national goal of solving the challenge of childhood obesity within a generation so that children born today will reach adulthood at a healthy weight. *Let’s Move!* will combat the epidemic of childhood obesity through a comprehensive approach that will engage every sector impacting the health of children and will provide schools, families and communities simple tools to help kids be more active, eat better, and get healthy. For more information www.letsmove.gov.

Glossary for Summer 2011 Calendar of Events (alphabetical)

Bookmobile

FCPL brings the bookmobile to Educare on regular cycle throughout the year. Our 3 and 4 year old classrooms hear a story and select books from the bookmobile. The program also selects teacher resource materials and Unit of Study books for each classroom to use.

Brunswick Senior Center

We have established a community connection with the Brunswick Senior Center. On specified dates, Senior Citizens play Bingo with our school-age children and collaborate with ELC for the Alex’s Lemonade Stand and the food bank community service projects.

Cooking Fun Days

Each classroom will participate in a weekly cooking activity to promote health and nutrition throughout the summer.

Community Outreach Activities

During the summer, several community projects are enacted to provide children the opportunity to participate in the experience of giving support to those in need. Examples of projects include: food bank donations(non-perishable food items are collected to take to local food banks), and Alex’s Lemonade Stand (children sell lemonade to support the cure for children’s cancer).

Curriculum Focus

Educare Learning Center uses The Creative Curriculum, a state approved curriculum published by Teaching Strategies. The focus of this curriculum is providing an environment that is predictable and supportive of children’s educational needs. Content areas of literacy, math, science, social studies and the arts are addressed through teacher-directed and child-selected activities.

Discovery Walks

Children will experience at least 4 Discovery Walks throughout the summer. Children should wear clothing appropriate for the weather. Families are welcome to use the pathway by letting the front desk know when they are on site. If a walk is taken without a center guide, parents are requested to sign our disclosure form.

EFA (Educare Family Association)

The Educare Family Association (EFA) has the expressed purpose of supporting Educare Learning Center through planning activities that build a sense of community among families. Meetings are held at ELC the first Wednesday of the month from 6:30-8:00. Child care is offered at no charge. EFA also oversees all fund raising activities and governs how the funds are used to enhance program offerings for children. All families are members of the EFA upon enrollment of a child in the center; EFA requires no fees for participation. For more information about the EFA, email efa@educatewithcare.com.

Emergency Closings

Educare makes every effort to stay open for scheduled program hours. When it is necessary to close during the day of operation due to weather, emergencies, or world events, parents/guardians will be contacted to pick up children. In the event of inclement weather conditions existing prior to the center’s daily opening, parents/guardians may contact the center by 5:30 a.m. or check the website by 6:00 a.m. for information regarding delays or closures.

Family Events

Educare coordinates periodic family events exclusively for Educare Families. This summer events to include:

- Annual Family Picnic—This event is held at the end of the year on the school-age playground to celebrate the past year. Families and staff are invited to bring a covered dish to share.
- Family Night at the Frederick Keys with Fireworks—Educare families are invited to attend a night at the Frederick Keys Baseball Game with other Educare Families. Families can purchase tickets at a discounted group rate.
- End of Summer Campfire—Families will enjoy time at the bottom of the Discovery Walk Path. Educare provides hot dogs and s’mores for families to roast over a campfire. Families are invited to bring a dish to share.

Educare Calendar of Events

Fire Drills

The program conducts fire drills once a month. The fire alarm is sounded and children exit the building to the school-age fenced-in playground. Once roll is taken, children return to the building.

Fitness Fun Days

Every week the center will participate in a Fitness Fun Activity. These activities will be completed outside on the playground by all ages. Examples of fitness fun days to include obstacle course, parachute play, bowling brigade, walk the line, water play day, bean bag toss, walk-a-thon, ball mania, bubble fun and field day.

Funding Factory

EFA participates in a fundraiser entitled the Funding Factory. This program recycles ink cartridges and cell phones. Educare receives points from each item recycled and points are used to purchase equipment (such as flat-screen computer monitors and digital cameras) for the classrooms. Visit the link on our web site homepage www.educatewithcare.com/Educare to learn more about the program.

Holidays and Early Closings

Educare is closed on the following holidays: New Year's Day, Memorial Day, 4th of July (Independence Day), Labor Day, Thanksgiving Day, and Christmas Day. If the holiday falls on Saturday, Educare will be closed on the prior Friday. If the holiday falls on Sunday, Educare will be closed on the following Monday.

On-site Field Trips

On-site field trips are provided throughout the summer:

- Moonbounce—a moonbounce will arrive at Educare for all children to enjoy throughout the day
- Mister Don Musical Performance—local musician will perform for children in two different shows
- Critters & Conservation—A variety of exotic wildlife “critters” will visit ELC. Children will receive a hands-on educational experience with the animals.

Parents' Night Out

The Educare Family Association coordinates a Parent's Night Out from 4-9 p.m. for Educare Parents/Guardians to enjoy a “night off” and leave the children with us.

Parent Orientations

New families are requested to attend a parent orientation meeting to learn more about policies and procedures and to network with other families. An orientation meeting is scheduled once a month; families only need to attend one orientation.

Parent Workshops

All workshops are held at Educare from 6:30—8:00 p.m. at no charge to parents. Refreshments are served at 6:30 p.m. for families. Childcare is provided for \$5.00 per child.

Popcorn Trolley

Once a month, the popcorn trolley finds its way to the main hallway, filling the building with the smell of freshly popped popcorn. Bags of warm popcorn are available to children and families free of charge.

School Age Field Trips

The school age classroom will be enjoying off-site field trips to various local locations such as the Brunswick Pool, Holiday Cinemas, Bowling Alley, Ice Skating, Frederick Keys Baseball Game.

Staff Development/In-service Days

Educare is closed to children on Staff In-service Days in order to provide staff with opportunities to attend training, make enhancements to room environments, prepare for conferences, and hold staff meetings. The program is closed to children on the following days:

- Thursday, June 16, 2011 (The day after the last day of FCPS)
- Friday, August 26, 2011 (The day before the first day of FCPS)

Special Classes

Food Groupies by Ms. Mary is a nutrition awareness program, provide toddlers through preschool with information and experiences using the Food Pyramid/My Plate to make healthy choices for snacks and meals. A series of videos and mini-discussions help to support discussions on healthy development.

Music Class by Ms. Janice is provided as a weekly enhancement to the curriculum throughout the school year for infants-preschool.

Spirit Days

Children are invited to participate in monthly spirit days such as pajama day (wear your pajamas to ELC), sports day (wear your favorite sports team), and hat day (wear a hat to ELC)

Units of Study

Five bi-weekly units of study will be offered throughout the summer: *Patriotic Parades, Spectacular Sports, Vigorous Vacations, Pleasant Picnics, and On-the-go Outdoors.*

Water Play Splash Days

All classrooms enjoy time outside in the water tables with water toys and water bottles to cool off. Children need to bring separate shoes and bathing suits during their assigned water play days.

Note: All dates/times are subject to change. Any changes will be posted on the website, parent bulletin board and at the front desk.